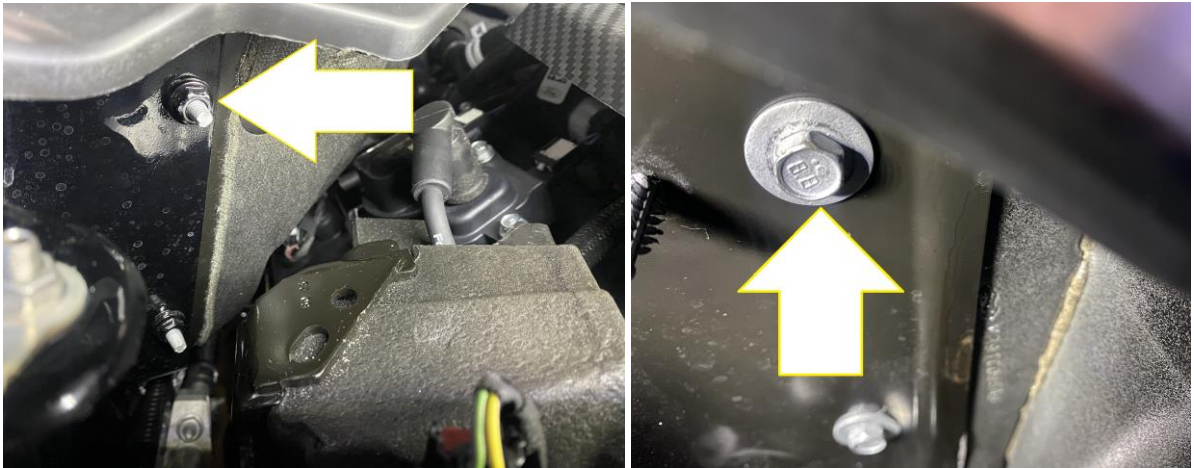


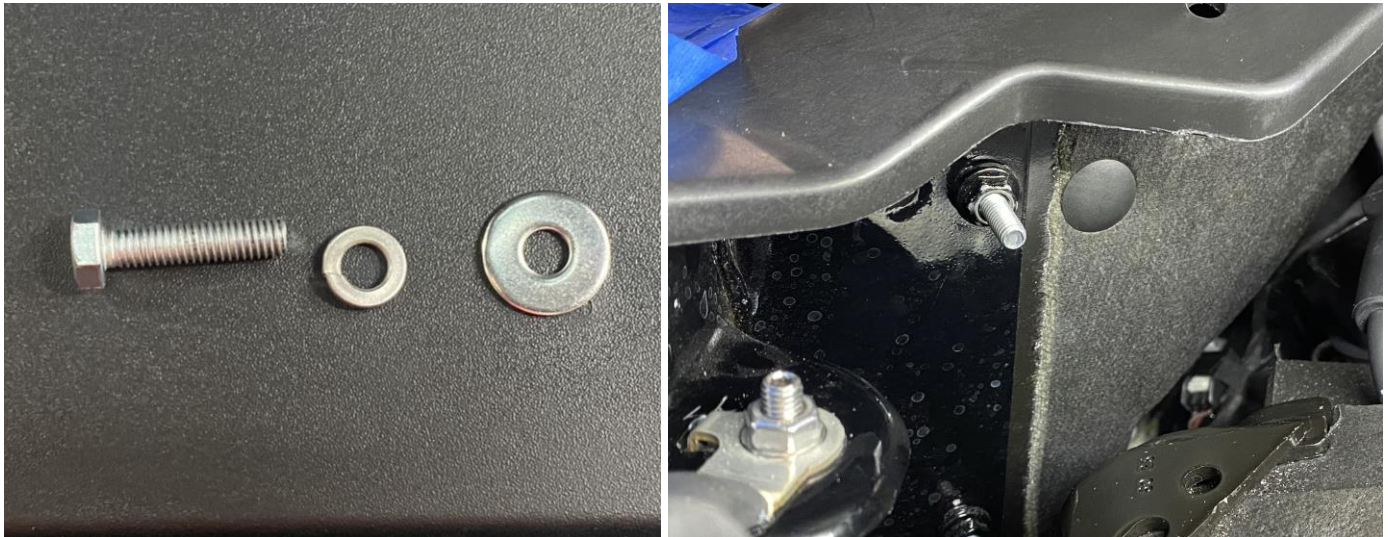
## UPR Oil Catch Can Installation

### 2024 Mustang GT 5.0 With Roush Supercharger

1. Remove the battery cover by removing the 3 plastic fasteners, then lift and slide forward. Locate the bulkhead bolt (Arrow) and remove it with a 10mm socket. You will access it from inside the battery compartment.



2. Install the 6mm x 25mm bolt , lockwasher, washer in place of the bulkhead bolt and tighten it.



3. Install the 6mm threaded long spacer bracket onto the bolt.



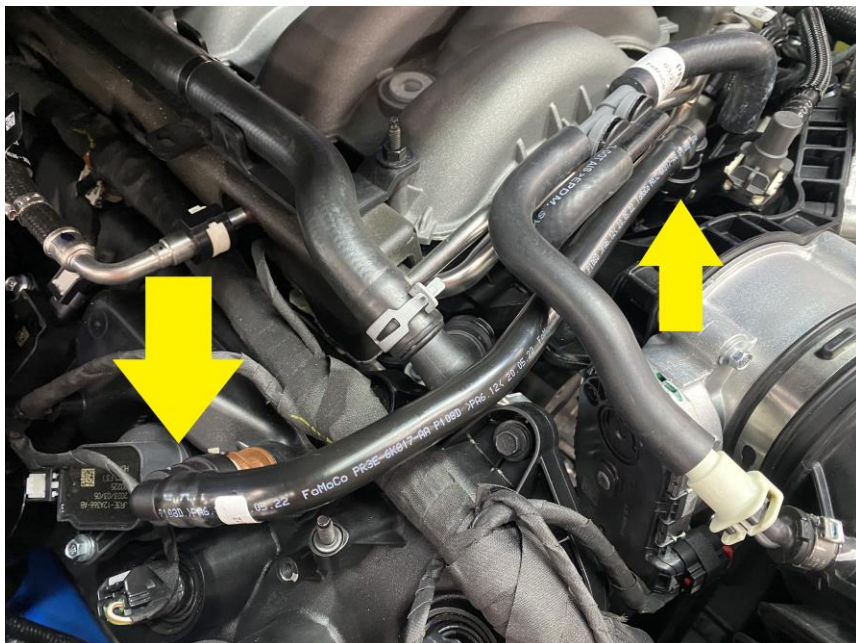
4. Install the bracket extension and 90 degree bracket using the supplied 6mm x 50mm long bolt. Be sure the short side of the 90 degree bracket is facing up. Tighten the bolt with a 10mm socket to secure the bracket.



5. Install the catch can onto the bracket with the supplied knob, and adjust the slotted catch can bracket by loosening the allen screws on top to gain the best position in relation to the engine and AC hose. Do not tighten the knob at this time.



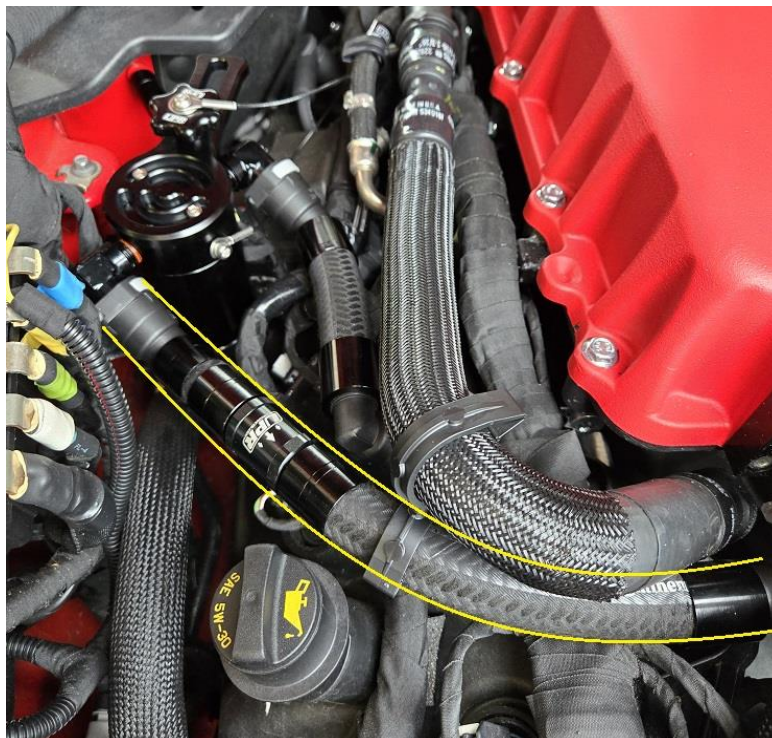
6. Locate the factory PCV hose that connects the PCV valve on the passenger side valve cover to the intake manifold/ Supercharger vacuum fitting. Remove the hose by sliding the tabs on the fittings to the side and lift it off.



7. The shortest hose will be the PCV hose. Install the PCV hose (45 degree end) onto the catch can fitting, then onto the PCV fitting on the valve cover (90 degree end).



8. Install the vacuum hose from the catch can to the Supercharger vacuum fitting. Be sure the arrow printed on the check valve is facing away from the catch can, towards the engine.



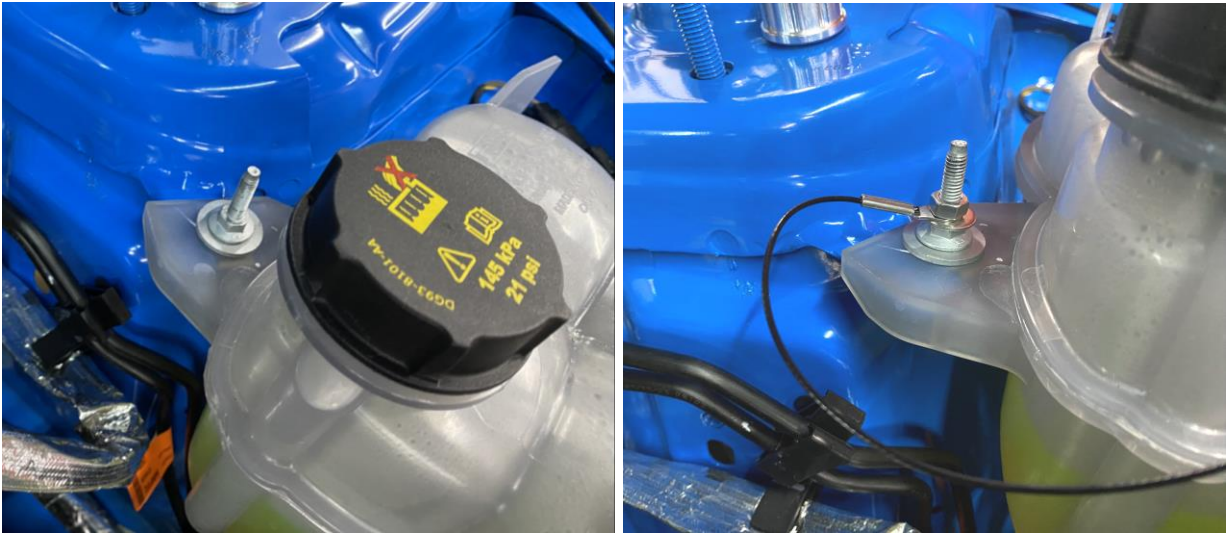
9. Make your final adjustments to the catch can bracket and tighten the allen screws on top, then the knob. If your car is equipped with a strut tower brace, reinstall it at this point. You will still be able to access the knob with the strut tower brace in place.



10. To service the catch can, first disconnect the hoses by pressing the buttons on the fittings and slide the hoses off of the catch can. **NEVER pry the buttons out** – this will damage the button and the fitting will need to be replaced. Unscrew the quick release knob and remove the catch can. Unscrew the catch can cup and empty the contents with your used drain oil and dispose of the liquid according to your local laws and regulations. You can wipe out the catch can with a rag, and / or clean the catch can with warm water and a mild detergent like dish soap or Simple Green. We do not recommend using solvents or harsh chemicals as it can damage the finish on the catch can. Inspect the O rings and replace as needed. Before reinstalling the catch can cup, lubricate the threads and O ring with a small amount of oil.

### Optional clean side catch can:

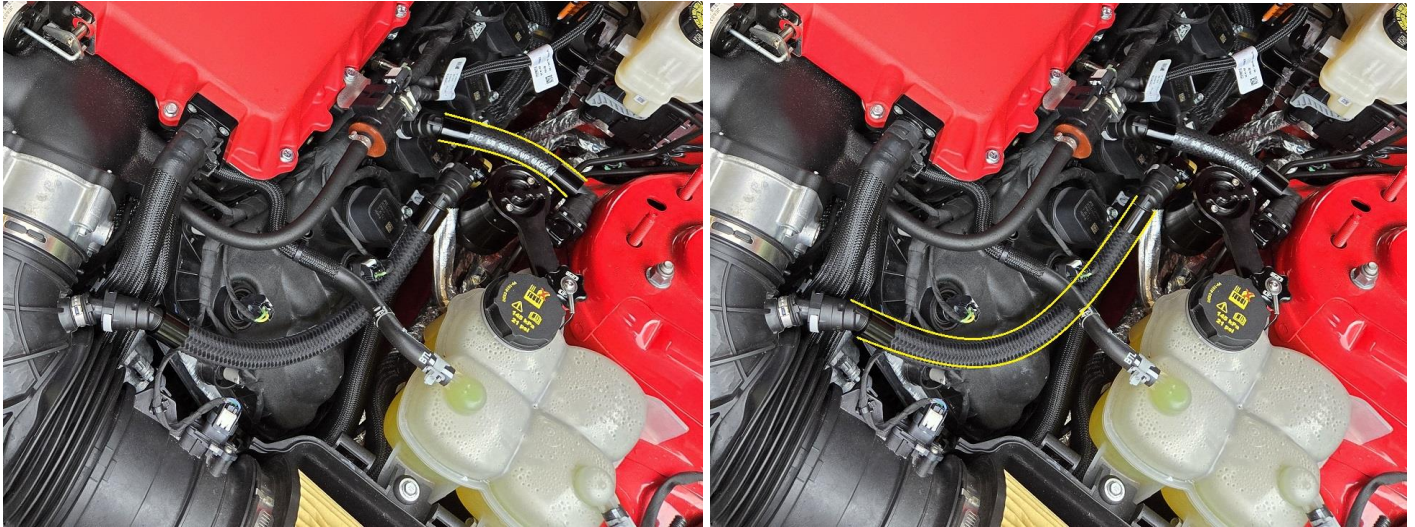
1. Locate the stud on the rear part of the coolant degas bottle on the driver side shock tower. Install the provided lanyard, then washer, and nut. Tighten the nut with a 10mm deep socket or wrench.



2. Install the Clean Side Catch Can onto the stud and secure it with the supplied knob as shown.



3. Install the short hose from the rear fitting on the catch can (connects with a 90 degree fitting) to the crankcase vent fitting on the valve cover (connects with a 45 degree fitting). Install the longer hose from the upward facing fitting on the catch can (connects with a 90 degree fitting) to the fitting on the driver side air intake tube (connects with a 45 degree fitting).



Always check and drain the catch can more often in winter / freezing weather. If the water/oil mixture in the catch can is allowed to freeze it will cause damage to the catch can and internal components. Any damage due to freezing is NOT WARRANTY. You must dispose of the liquid collected in the catch can properly (with used waste oil) properly according to your local laws.

***Product Liability Statement:** The purchase of the product, manufactured by UPR Products Inc. completes an agreement between UPR Products Inc. and the customer. UPR Products Inc. assumes no liability for damages or injury incurred by the buyer of this product. The purchaser or user of this product is responsible for the proper disposal of any hazardous materials (oil catch can contents). The buyer has complete responsibility for the installation, use and upkeep of this product.*