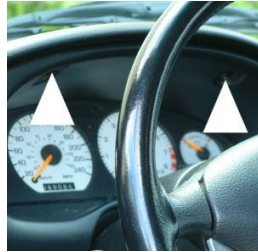


## White Faced EL Glow Gauges



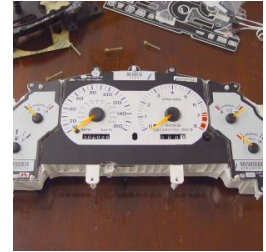
Remove the factory headlight knob by sliding a small flat head screwdriver into the slot on the side of the headlight knob. Pry the factory clip towards you, then pull on the headlight knob. It should slide off the stem.



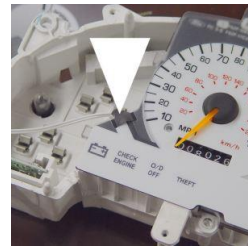
Using a torx screwdriver, remove the two bezel retaining screws from the top of the dash bezel. Once removed, gently pull on the bezel which will pop away from the dash. When the bezel has been removed, remove the four speedo cluster retaining screws. Tilt the cluster outward and detach the two Electrical plugs by depressing the tabs on the top. The speedo cluster should now be able to be removed entirely from the dash.



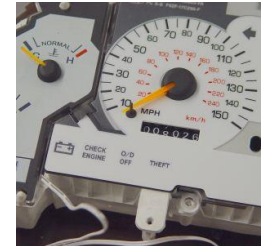
Once the speedo cluster is removed from the car, place it on a desk or flat surface to begin the White Faced / EL installation. Remove all of the gold colored retaining screws that surround the outside of the clear / black plastic housing. The black bezel and clear plastic should now be able to separate from the cluster.



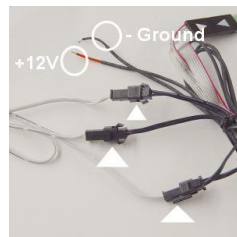
Carefully slide each piece of the Gauge set over top of the factory needles. DO NOT REMOVE THE NEEDLES! Repeat the same procedure for each piece. For 1999+ Mustangs the gauge set is one piece, but the same procedure applies.



On 1994-1998 Mustangs the left gauge assembly must be removed to install the center overlay. Use a flat screwdriver to pry the gauge assembly out of its sockets. It will simply pop out. Route the overlay electrical wire between the gauge assemblies as pictured, and reinstall the assembly.



Re-install the black / clear bezel and the gold retaining screws.



Plug each wire connector to the supplied transformer. There is no specific connector required, and there will be transformer plug left over for a future product. There is two electrical connections to be made. The Black coated wire should be connected to a very good chassis ground. The Red coated wire can be connected to a switched +12V source or the headlight switch.



Mount the dimmer control on the dash.